

General purpose 3 Phase 4 Wire EMC/EMI / RFI Filter

SL SERIES

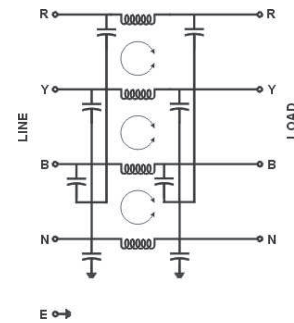
- ⑩ The 3 phase filters are designed to suppress either common mode, differential mode or both in a wide frequency range. These filters are specially designed to control the emission in common. They are available in a wide current range. It is also effective in EMI prevention coming into the device.
- ⑩ SL series Filters are specially suited as Input filters to Panels employing motor control devices such as drives, inverters etc.
- ⑩ Applications include NC Control devices, inverters for motors, Motor drives(C2 specification),UPS, etc.



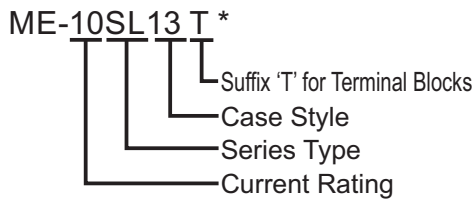
Technical specifications:

Maximum Voltage	440VAC
Operating Frequency	DC-400Hz
Rated Current(@ 40°C)	3,6,10,15,20,30,50,60,80, 100, 120,150,200,300,400, 800, 1000.
Leakage Current @ 440VAC, 50 Hz.	<1.8 mA (<=60A) <18.0 mA (<=200A) <75.0 mA (>200A)
High Potential Test Voltage	
Line to Ground	2.8 KVDC (2 Secs)
Line to Line	2.1 KVDC (2 Secs)
Insulation Resistance	>500Mohms @ 500VDC
Temperature Range	-25°C to +85°C

Electrical Schematic



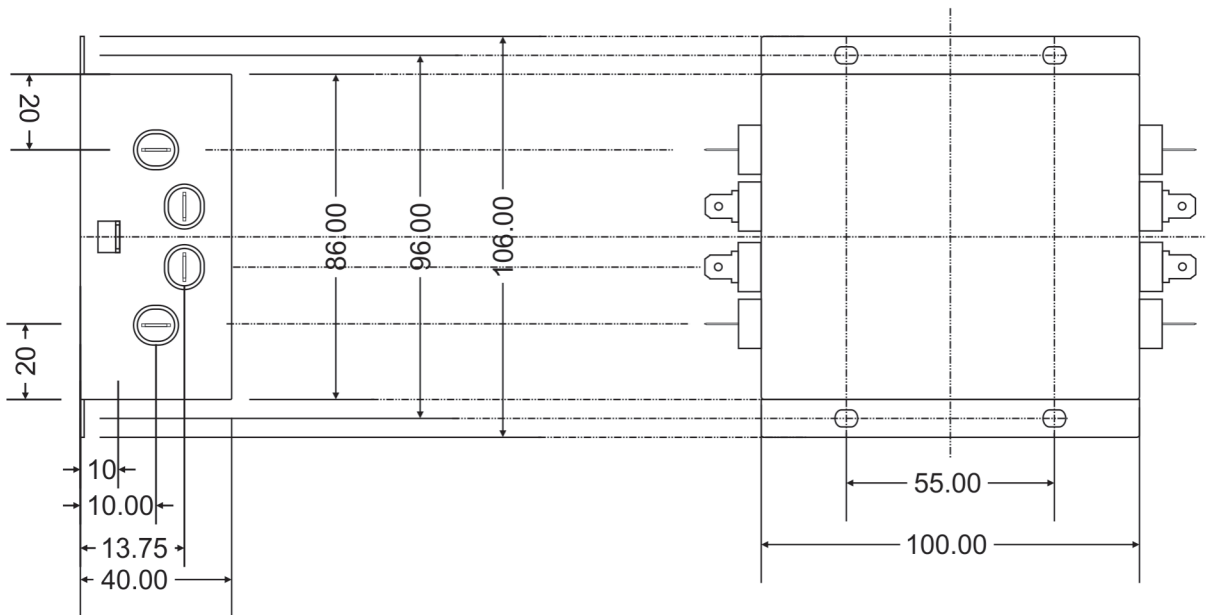
Ordering Information:



Available part numbers:

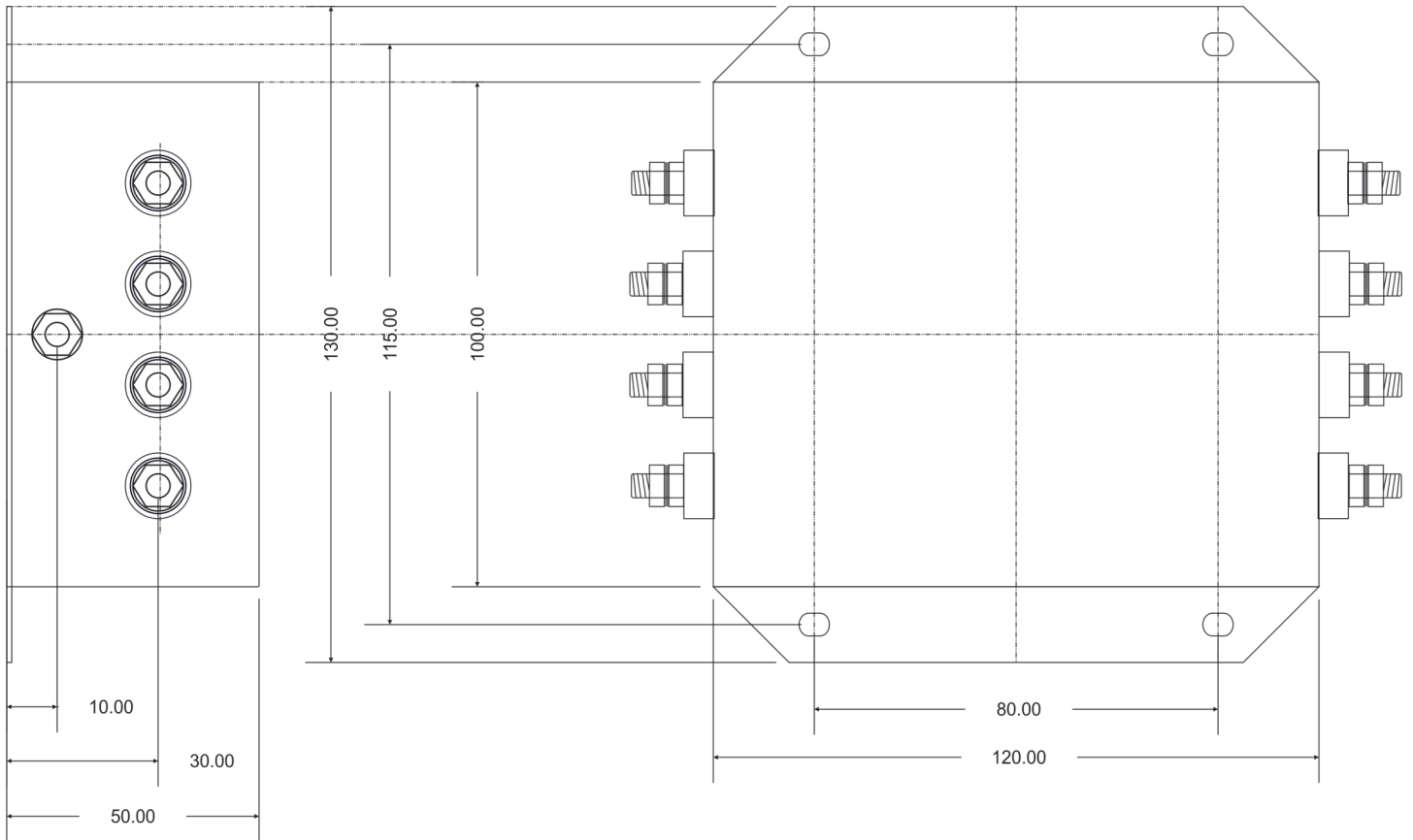
ME-3SL13	ME-50SL18	ME-300SL25
ME-6SL13	ME-60SL18	ME-400SL25
ME-10SL13	ME-80SL19	ME-500SL25
ME-15SL13	ME-100SL19	ME-600SL25
ME-20SL20	ME-120SL19	ME-700SL27
ME-30SL18	ME-150SL23	ME-800SL27
ME-40SL18	ME-200SL23	ME-1000SL27

**DIMENSIONAL DRAWINGS:
CASE 13:**

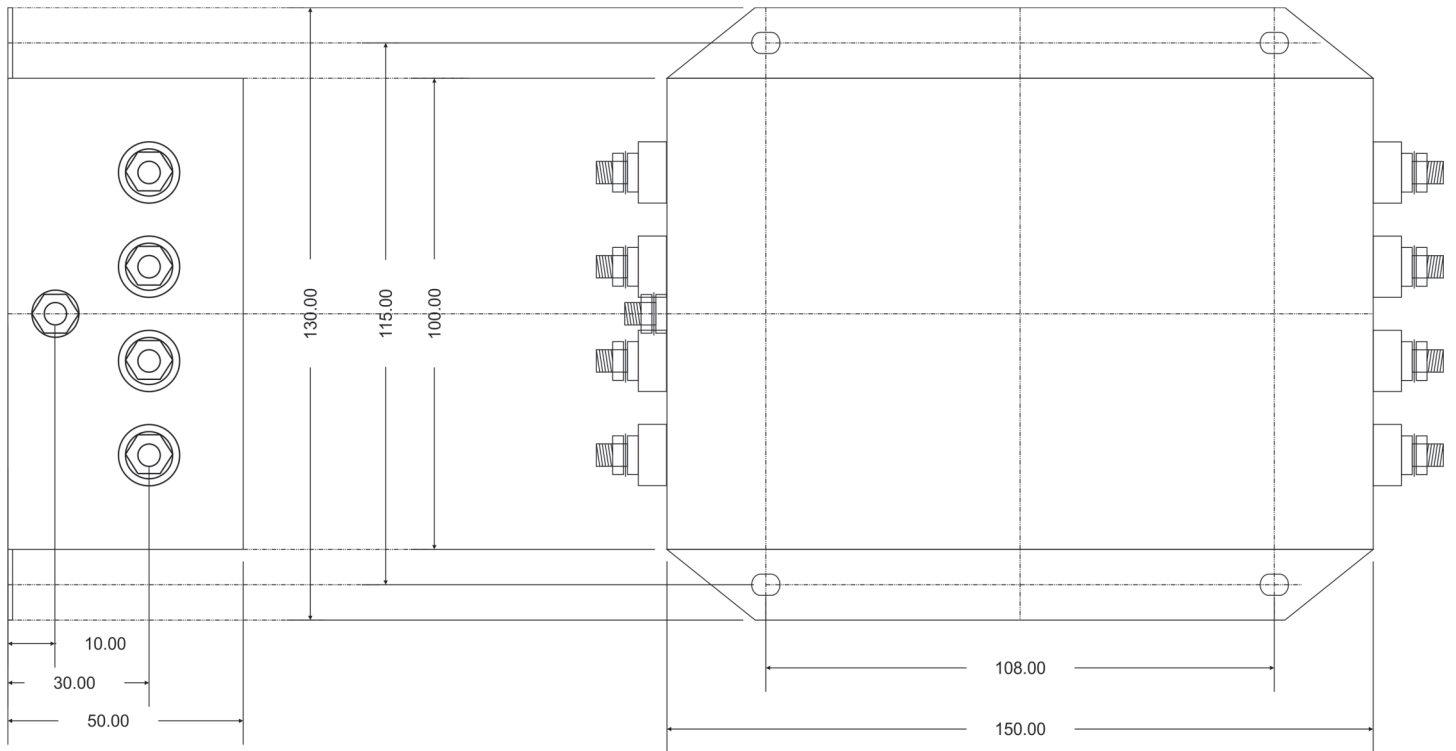


* Suffix 'T' terminations as terminal blocks available for currents upto 60A
All dimensions are in mm ± 2mm

Case 20:

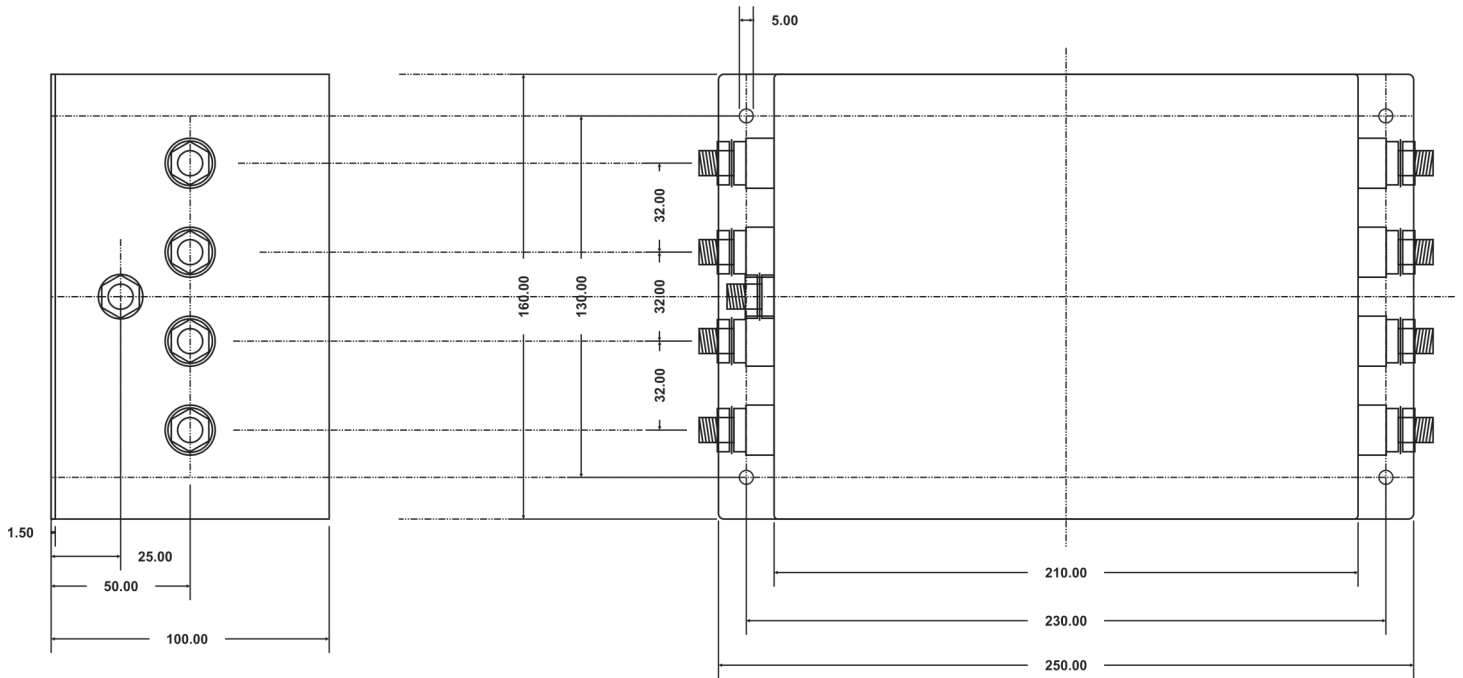


Case 18:

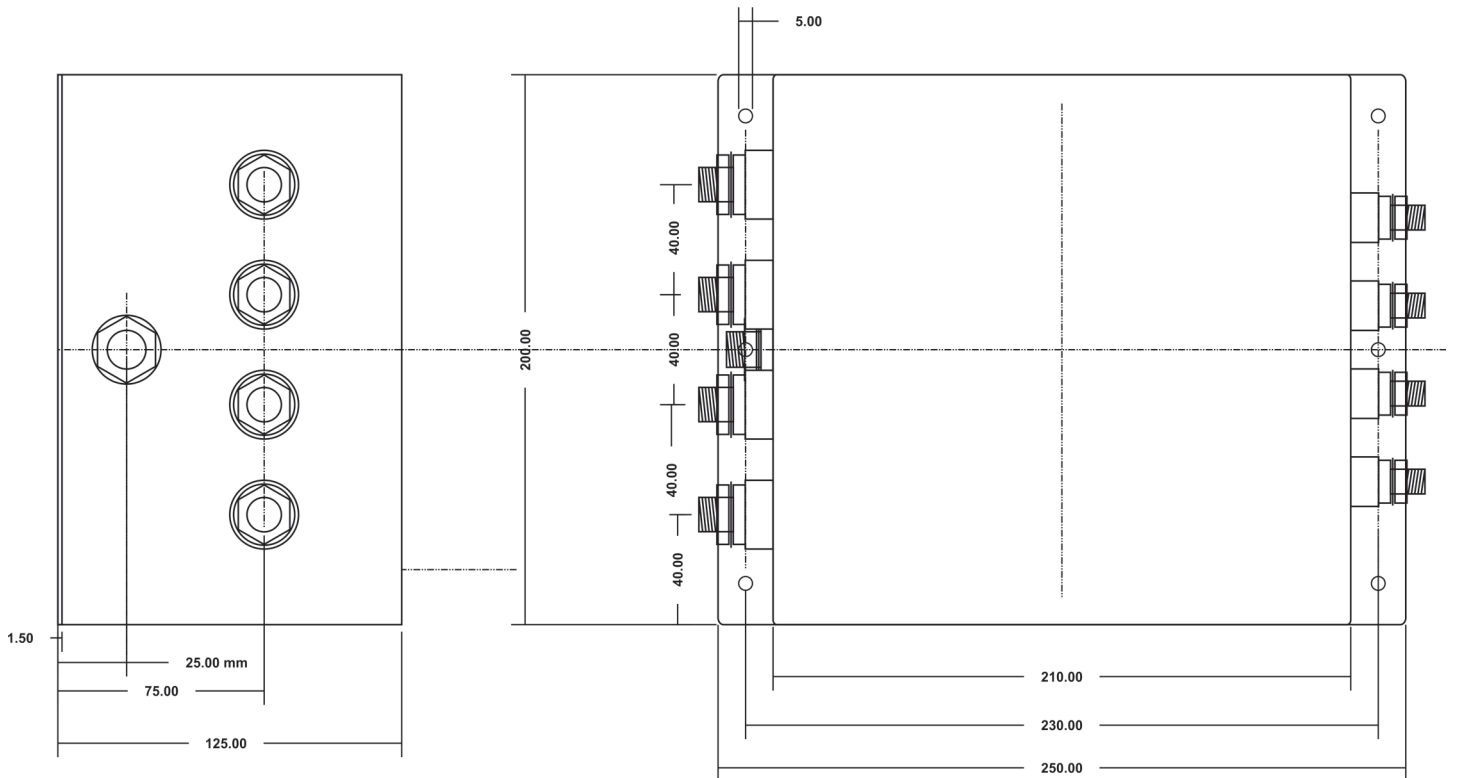


All dimensions are in mm \pm 2mm

Case 19:

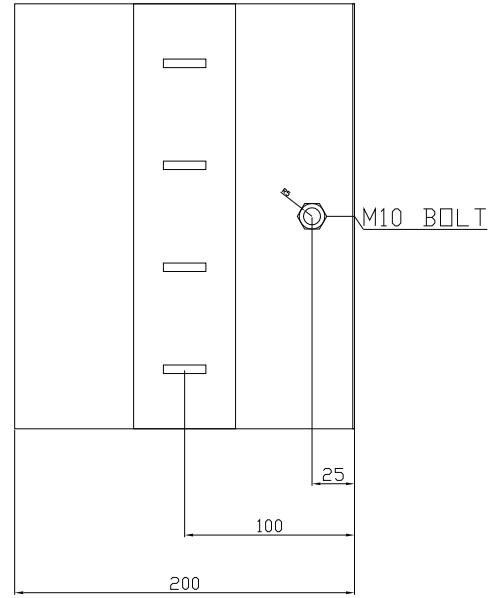
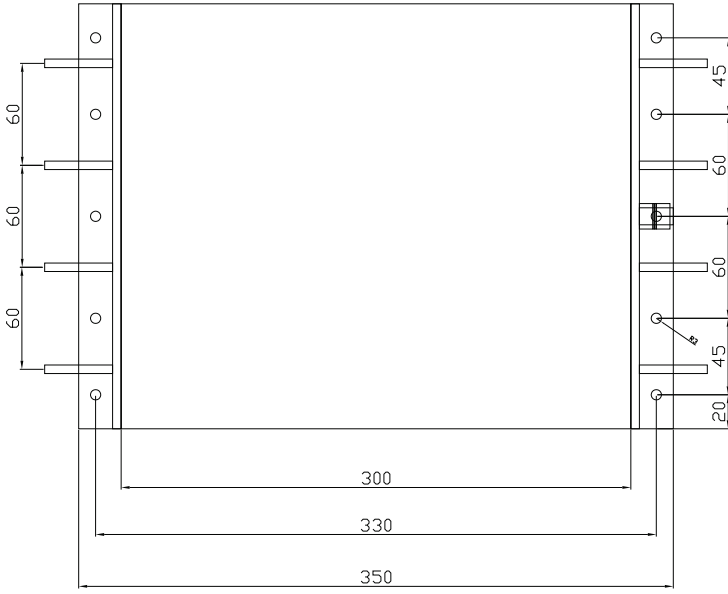


Case 23:



All dimensions are in mm \pm 2mm

Case 25:



A

Case 27:

