

High Performance Two stage EMI / RFI / EMC Filters

LHH/SHH SERIES

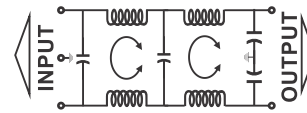
- Switching power supplies are being used more frequently because they conserve energy. But they generate their own RFI noise. These RFI power line filters have been developed to reduce this conducted noise to acceptable limits.
- They have lower leakage current and are also suitable for non-patient medical equipment, and portable equipments.
- Applications include Computer application devices, switched power supplies, medical equipment (extremely sensitive line ECG's / EMG's, EEG's) etc, telecom equipments.



Technical specifications:

Maximum Voltage	250VAC
Operating Frequency	DC-400Hz
Rated Current(@ 40°C)	1A, 3A, 6A, 10A, 15A, 20A, 30A, 50A, 60A, 80A, 100A, & 150A
Leakage Current @ 240VAC, 50 Hz.	0.5mA ≤ 15A & 1.0mA ≥ 15A
High Potential Test Voltage	
Line to Ground	2 KVAC (2 Secs)
Line to Line	2 KVDC (2 Secs)
Insulation Resistance	>500Mohms @ 500VDC
Temperature Range	-25°C to +85°C

Electrical Schematic



Ordering Information:

ME-50SHH18

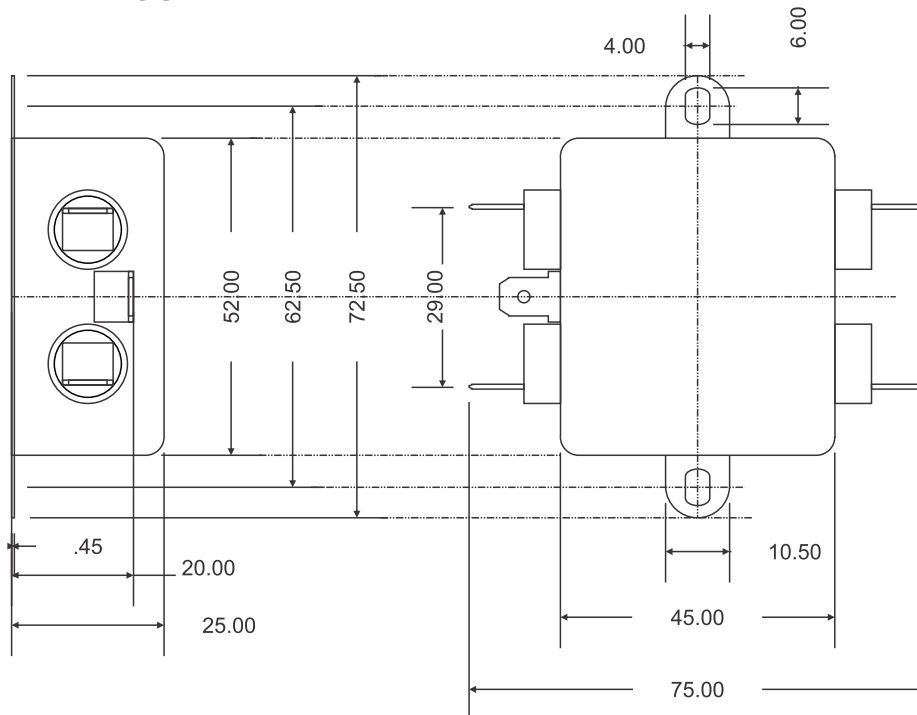


Available part numbers:

- | | | |
|-------------|-------------|-------------|
| ME-1LHH11 | ME-1LHH16 | ME-3LHH29 |
| ME-6LHH29 | ME-10LHH29 | ME-15LHH29 |
| ME-20SHH13 | ME-30SHH13 | ME-40SHH18 |
| ME-50SSH33 | ME-60SHH33 | ME-80SHH32 |
| ME-100SHH32 | ME-120SHH32 | ME-150SHH32 |

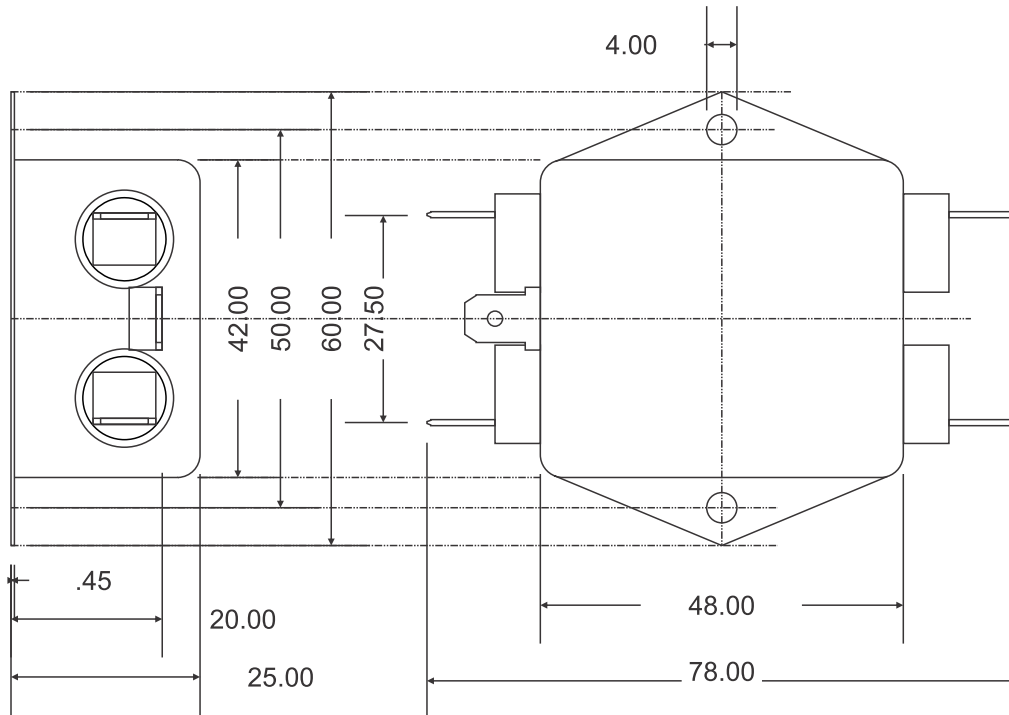
DIMENSIONAL DRAWINGS:

Case Style 11:

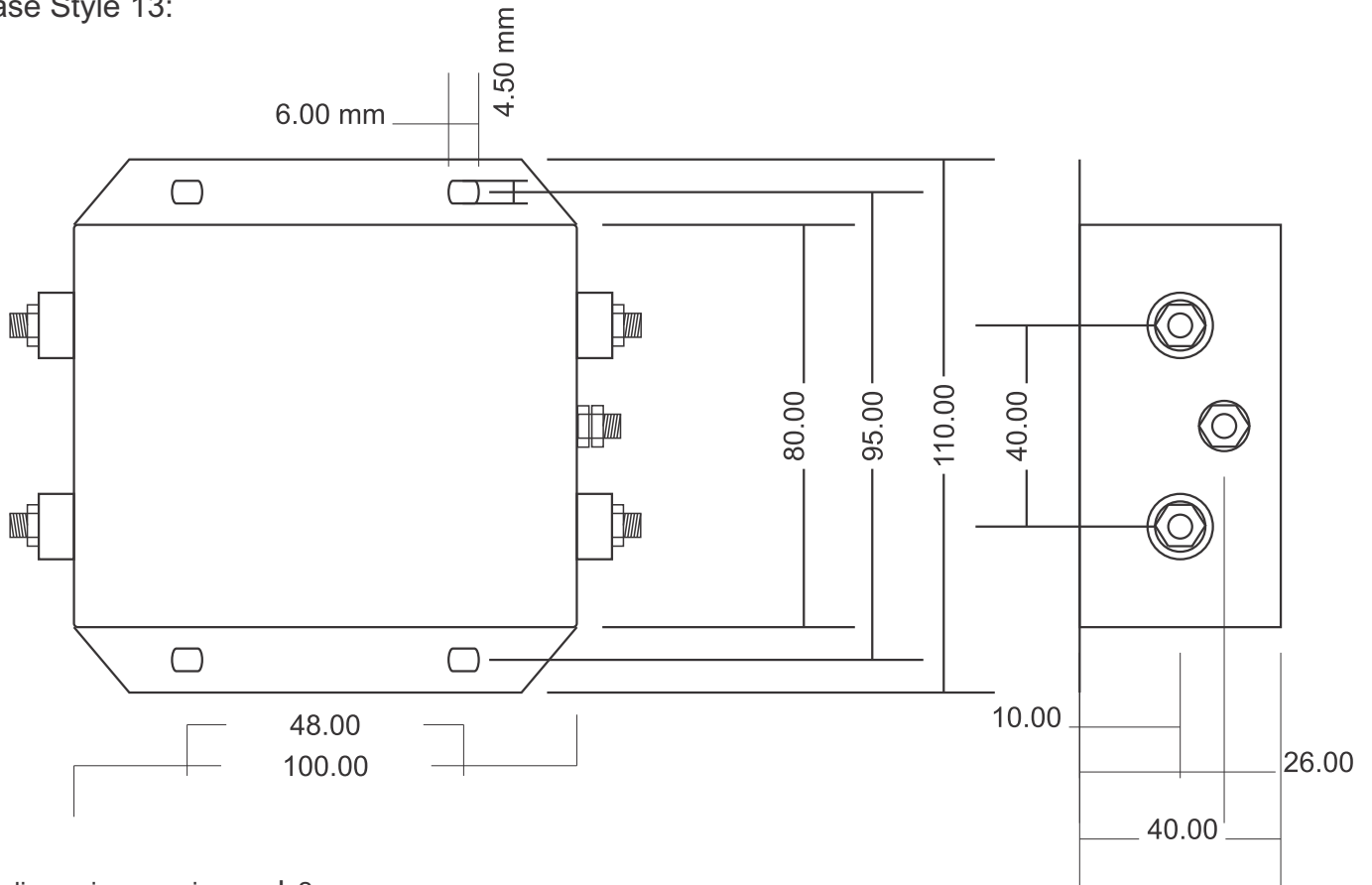


All dimensions are in mm ± 2mm

Case Style 16:

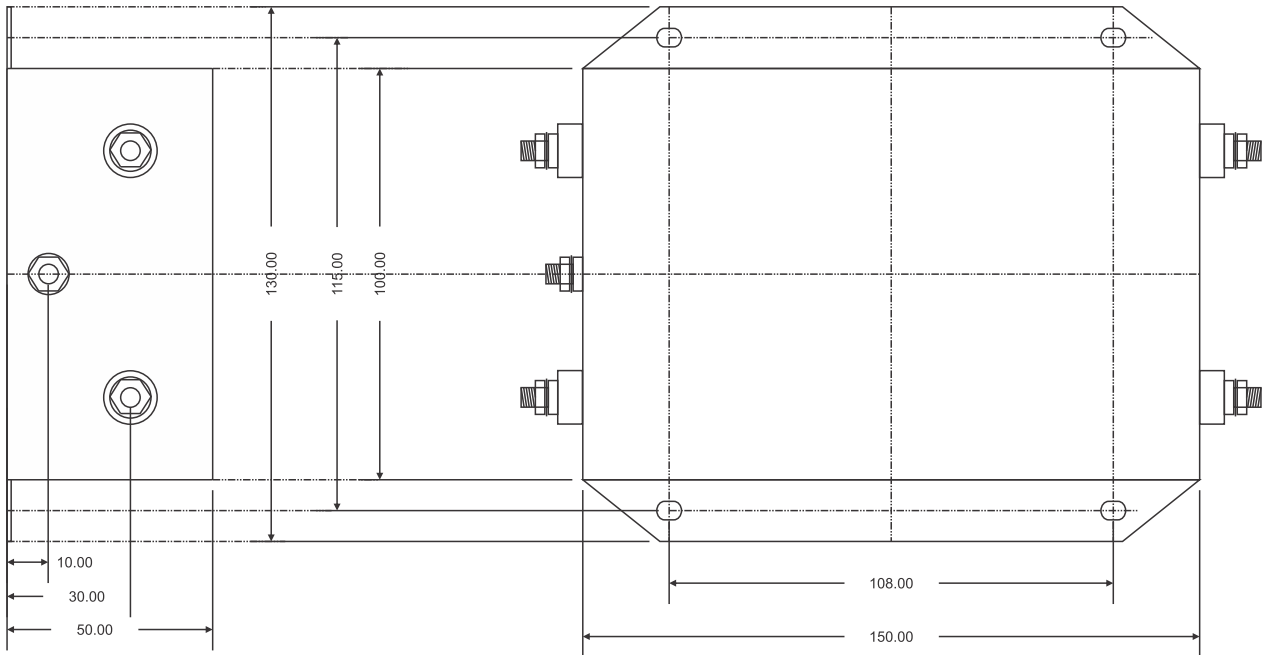


Case Style 13:

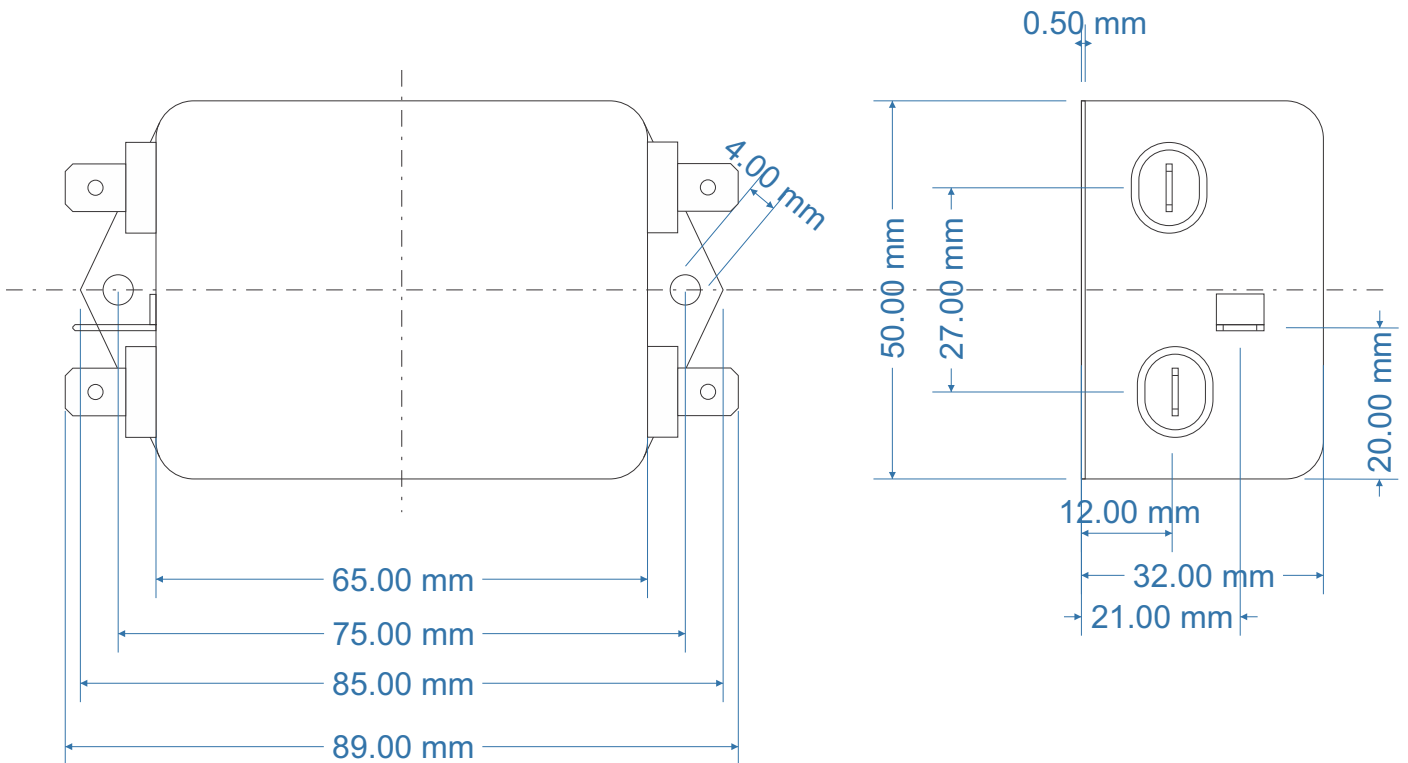


All dimensions are in mm \pm 2mm

Case Style 18:

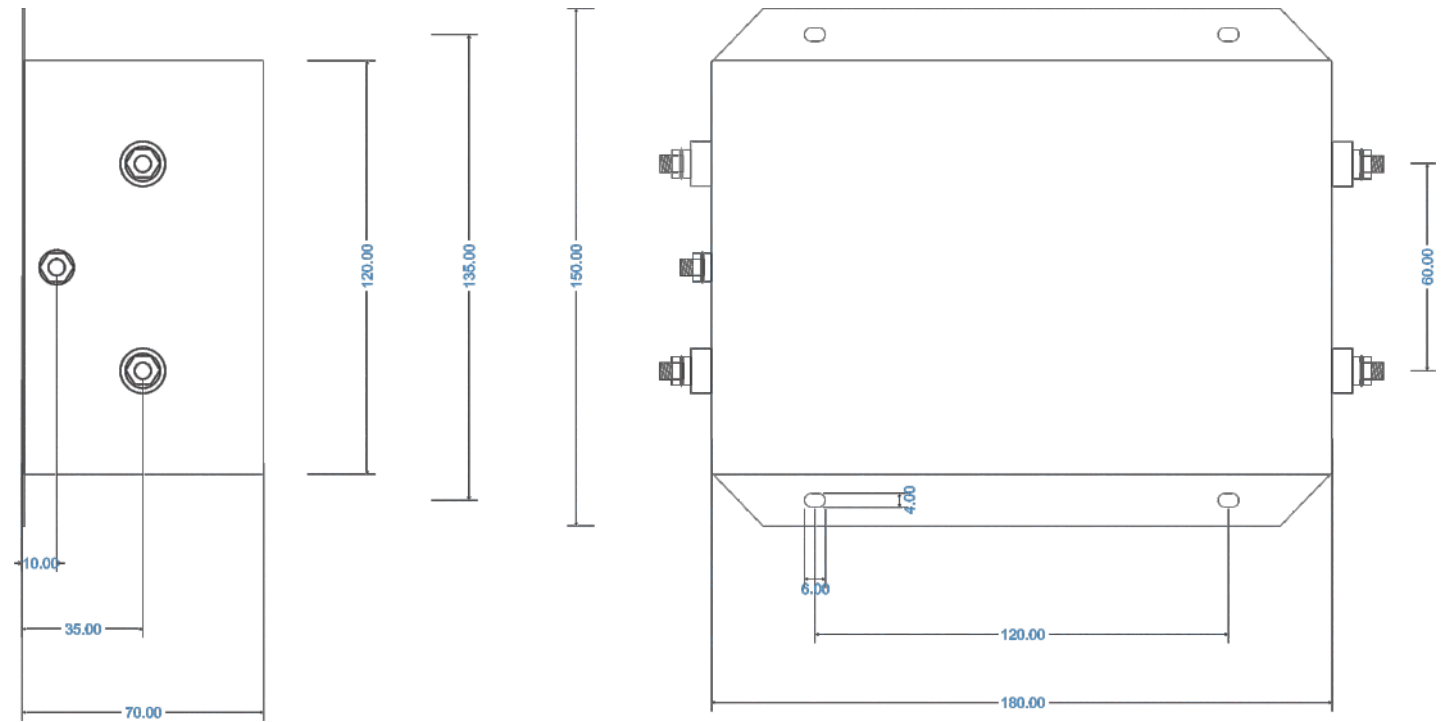


Case Style 29:

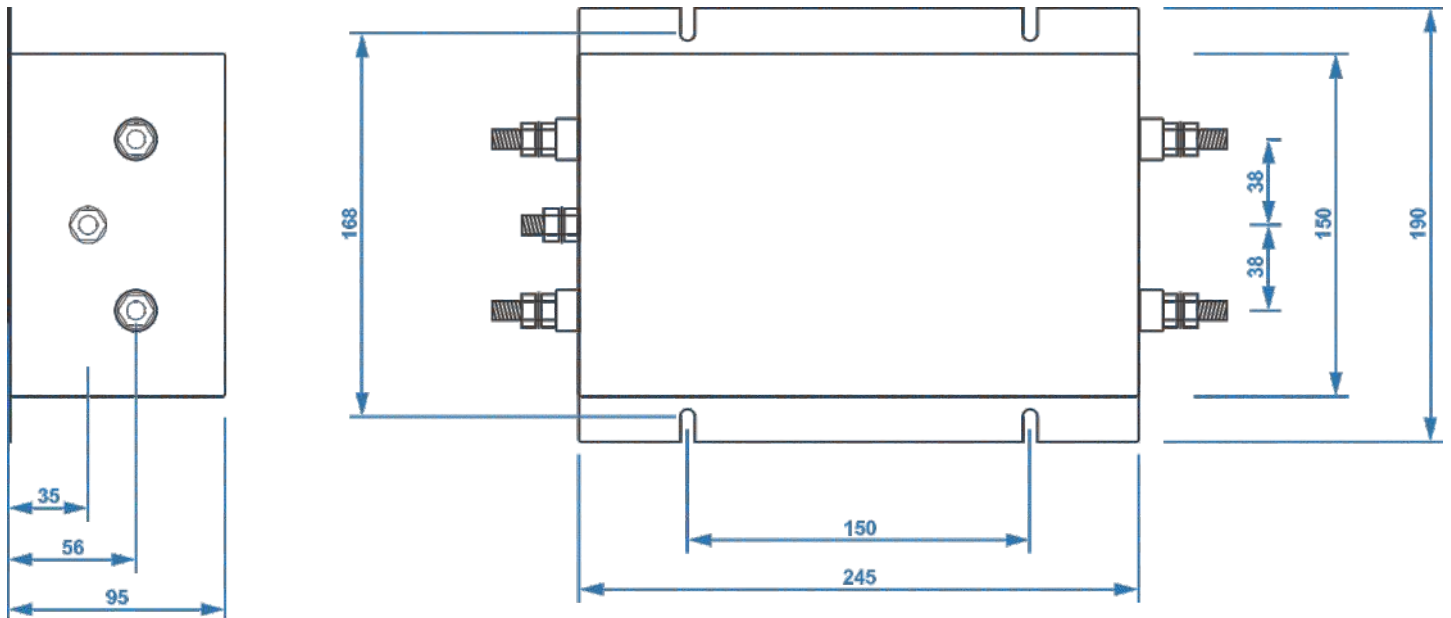


All dimensions are in mm \pm 2mm

Case Style 33:



Case Style 32:



All dimensions are in mm \pm 2mm