

High Performance Two stage EMI / RFI / EMC Filters

LH / SH SERIES

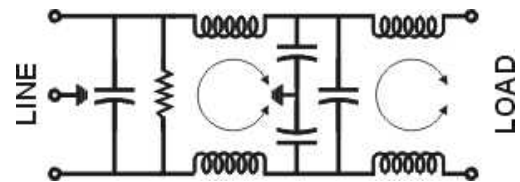
- Switching power supplies are being used more frequently because they conserve energy. But they generate their own RFI noise. These RFI power line filters have been developed to reduce this conducted noise to acceptable limits.
- They have lower leakage current and are also suitable for non-patient medical equipment, and portable equipments.
- Applications include Computer application devices, switched power supplies, medical equipment (extremely sensitive line ECG's / EMG's, EEG's) etc, telecom equipments.



Technical specifications:

Maximum Voltage	250VAC
Operating Frequency	DC-400Hz
Rated Current(@ 40°C)	1A, 3A, 6A, 10A, 15A, 20A, 30A, 50A, 60A, 80A, 100A, & 150A
Leakage Current @ 240VAC, 50 Hz.	0.5mA<= 6A & 1.0ma >=6A
High Potential Test Voltage	
Line to Ground	2 KVAC (2 Secs)
Line to Line	2 KVDC (2 Secs)
Insulation Resistance	>500Mohms @ 500VDC
Temperature Range	-25°C to +85°C

Electrical Schematic



Ordering Information:

Available part numbers:

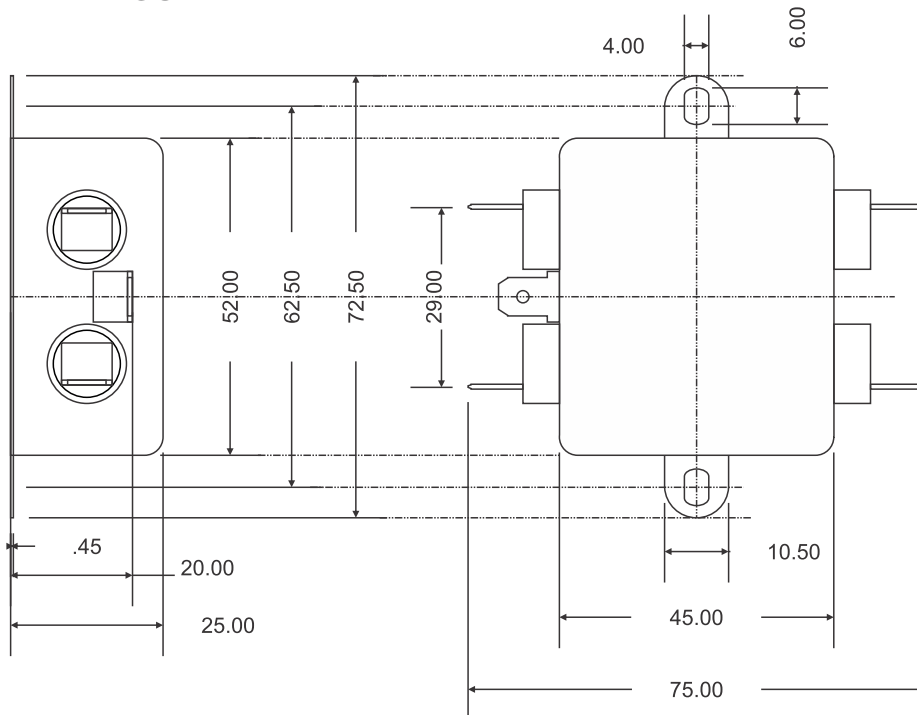
ME-50SH18



ME-1LH11	ME-3LH11	ME-6LH11
ME-1LH16	ME-3LH16	ME-6LH16
ME-10SH13	ME-15SH13	ME-20SH18
ME-30SH18	ME-50SH18	ME-60SH18
ME-80SH24	ME-100SH24	ME-120SH24
ME-150SH24		

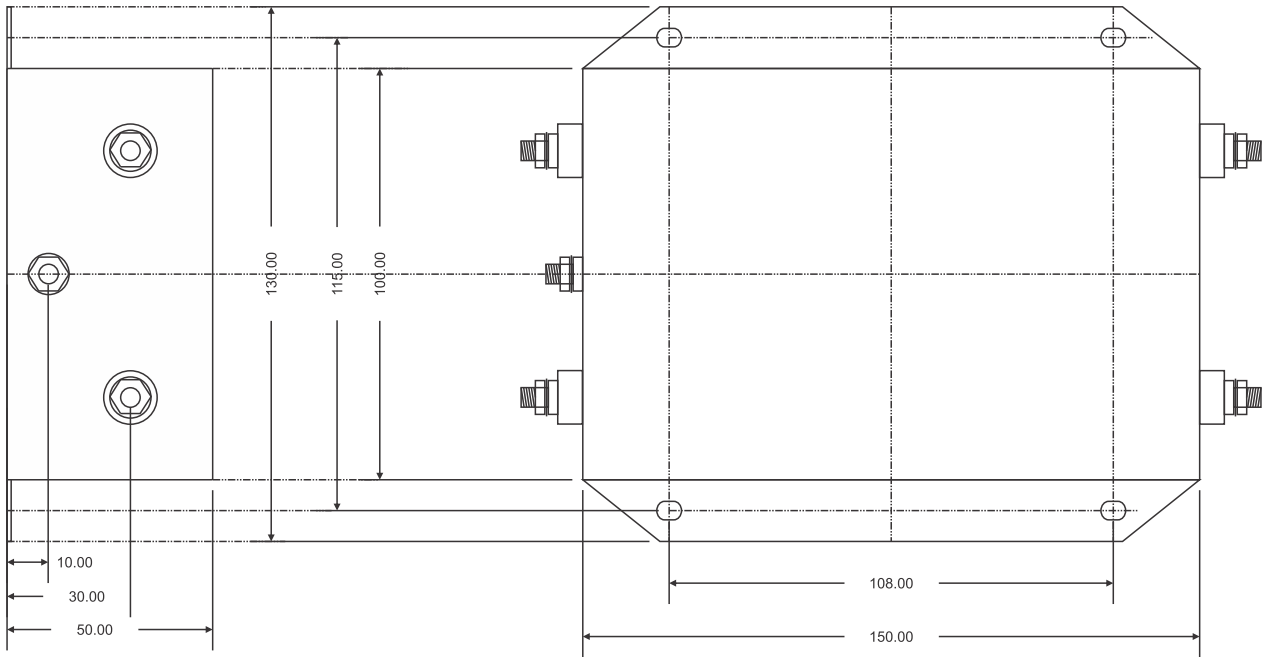
DIMENSIONAL DRAWINGS:

Case Style 11:

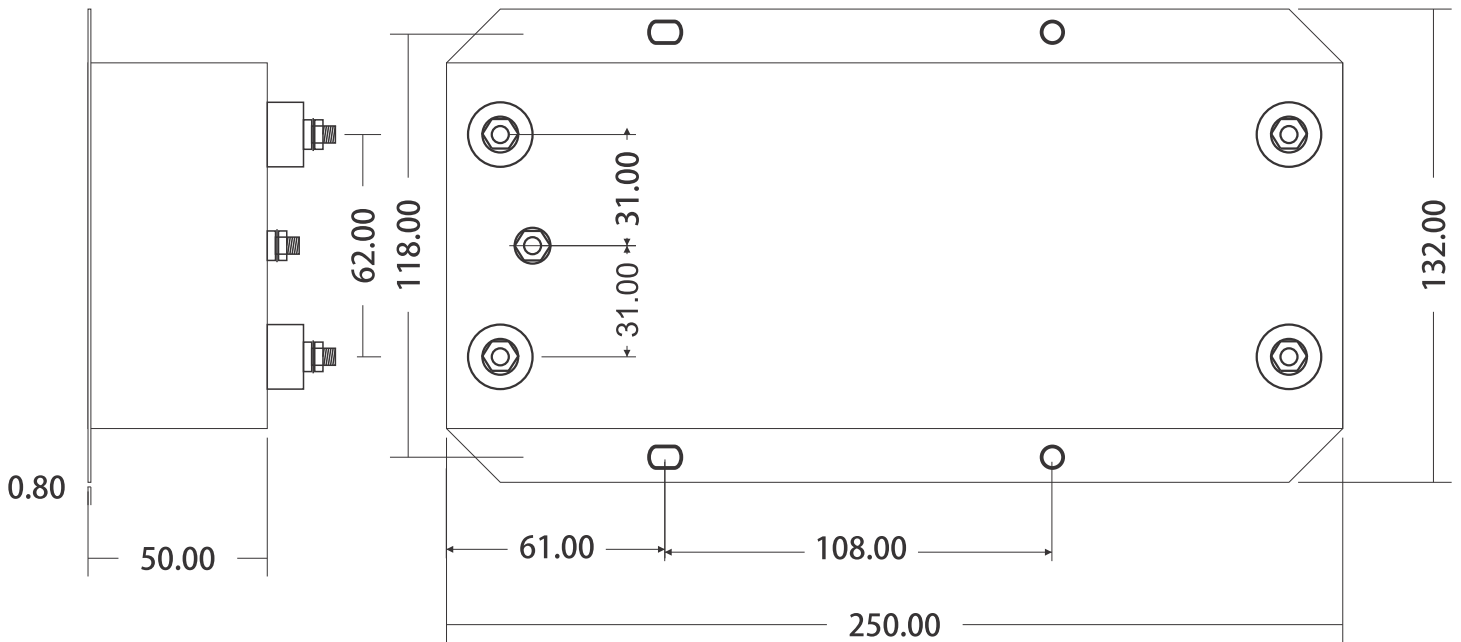


All dimensions are in mm ± 2mm

Case Style 18:



Case Style 24:



All dimensions are in mm \pm 2mm