

**IEC INLET EMI / RFI / EMC Filters**

**LA30 SERIES**

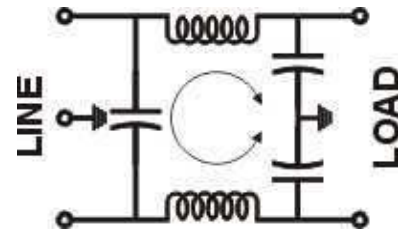
- These are general purpose IEC C22 Inlet filters, effectively providing RFI control of the line to ground noise. These are compact and meets the very low leakage current requirements for non-patient medical equipments.
- These filters are high current filters in compact design, with IEC C22 type inlets.
- Applications include equipment requiring small device such as digital application devices (ECR & others), various test equipments, Refrigerators, medical equipments, computing devices etc.



**Technical specifications:**

Maximum Voltage	250VAC
Operating Frequency	DC-400Hz
Rated Current(@ 40°C)	15A
Leakage Current @ 240VAC, 50 Hz.	0.5mA
High Potential Test Voltage	
Line to Ground	2 KVAC (2 Secs)
Line to Line	2 KVDC (2 Secs)
Insulation Resistance	>500Mohms @ 500VDC
Temperature Range	-25°C to +85°C

**Electrical Schematic**



**Ordering Information:**

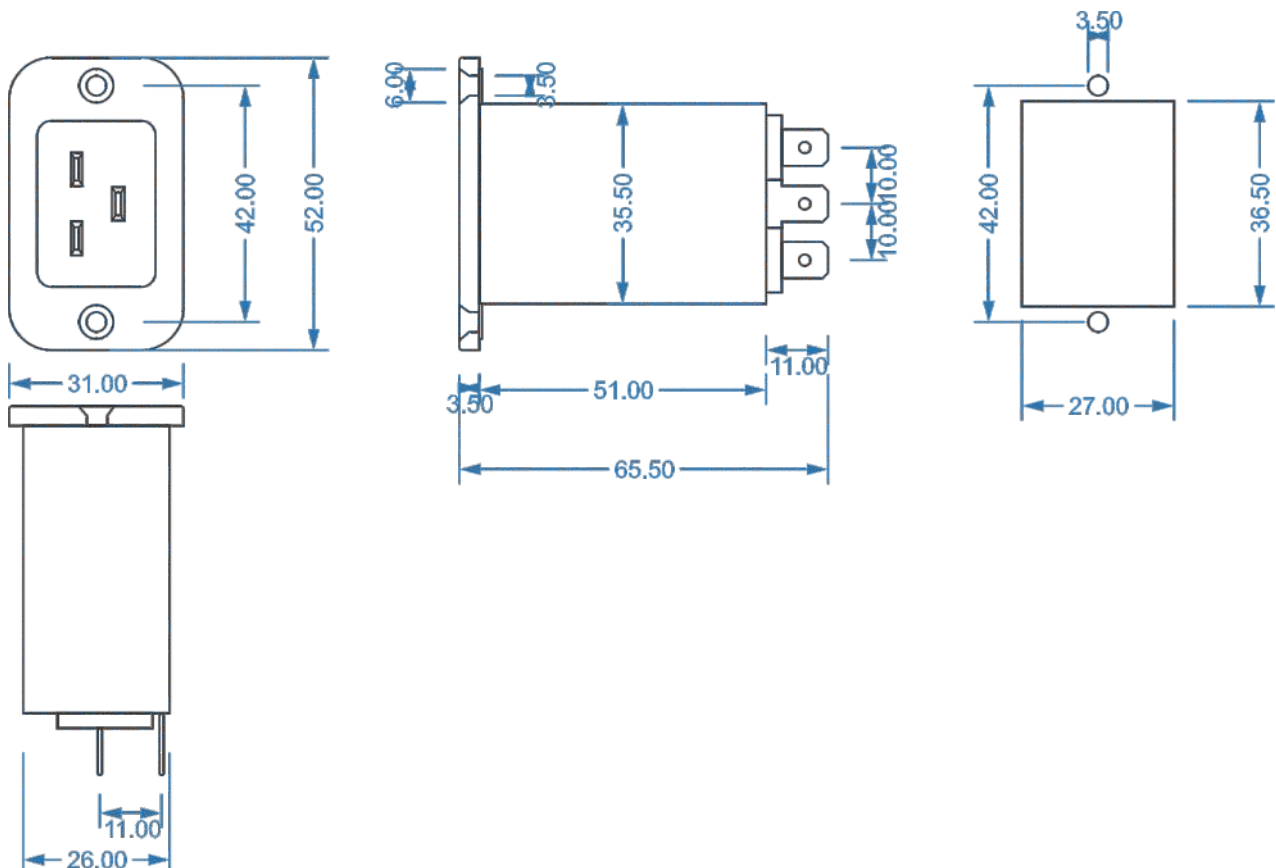
**Available part numbers:**

ME-15LA30

ME-15LA30

Series Type  
Current Rating

**DIMENSIONAL DRAWINGS:**



All dimensions are in mm ± 2mm