

General purpose 3 Phase 4 Wire EMC/ EMI / RFI Filter in Bookshelf design SL40T SERIES

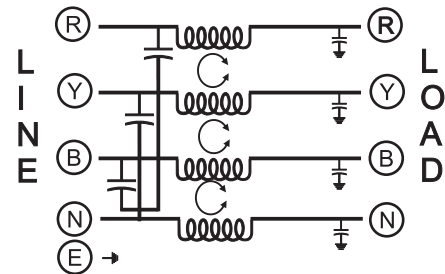
- The 3 phase filters are designed to suppress either common mode, differential mode or both in a wide frequency range. These filters are specially designed to control the emission in common. They are available in a wide current range. It is also effective in EMI prevention coming into the device.
- SL40T series Filters are specially suited as Input filters to Panels employing motor control devices such as drives, inverters etc.
- Applications include NC Control devices, inverters for motors, Motor drives(C2 specification), UPS, etc.
- They come in Touch Safe terminal blocks, as terminations.



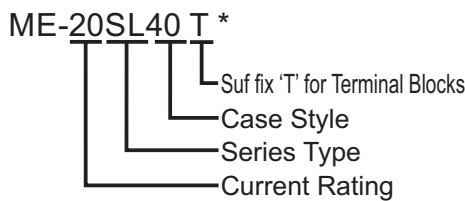
Technical specifications:

Maximum Voltage	440VAC
Operating Frequency	DC-400Hz
Rated Current(@ 40°C)	3,6,10,15,20,30,50,60.
Leakage Current @ 440VAC, 50 Hz.	<1.8 mA (<=60A)
High Potential Test Voltage	
Line to Ground	2.8 KVDC (2 Secs)
Line to Line	2.1 KVDC (2 Secs)
Insulation Resistance	>500Mohms @ 500VDC
Temperature Range	-25°C to +85°C

Electrical Schematic



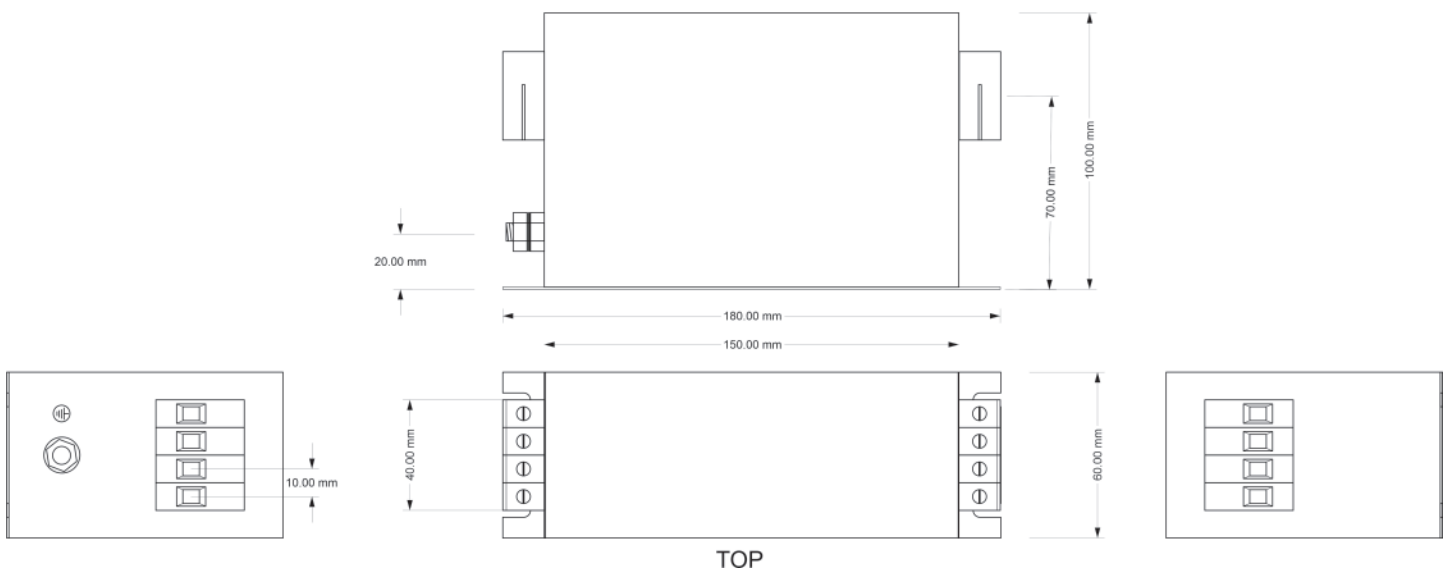
Ordering Information:



Available part numbers:

- ME-3SL40T
- ME-6SL40T
- ME-15SL40T
- ME-20SL40T
- ME-30SL40T
- ME-40SL40T
- ME-50SL40T
- ME-60SL40T

**DIMENSIONAL DRAWINGS:
CASE 40T:**



* Suf fix 'T' terminations as terminal blocks available for currents upto 60A
All dimensions are in mm ± 2mm