

General Purpose High performance EMI / RFI / EMC Filters

LF SERIES

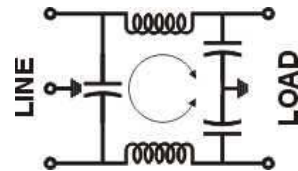
- These RFI power line filters are general purpose common mode and differential mode filters. They are effective in the control of line to line as well as line to ground RFI interference. They are particularly suited for application where pulsed, continuous and / or intermittent RFI interference is present.
- They meet the very low leakage current requirements of non-patient medical equipment.
- Applications include Test equipments, control devices, medical equipment, computers and peripherals, Currency counters and other industrial devices.

Technical specifications:

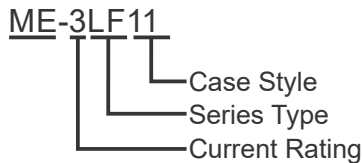
Maximum Voltage	250VAC
Operating Frequency	DC-400Hz
Rated Current(@ 40°C)	3A, 6A, 10A, 15A, & 20A
Leakage Current @ 240VAC, 50 Hz.	0.5mA
High Potential Test Voltage	
Line to Ground	2 KVAC (2 Secs)
Line to Line	2 KVDC (2 Secs)
Insulation Resistance	>500Mohms @ 500VDC
Temperature Range	-25°C to +85°C



Electrical Schematic



Ordering Information:

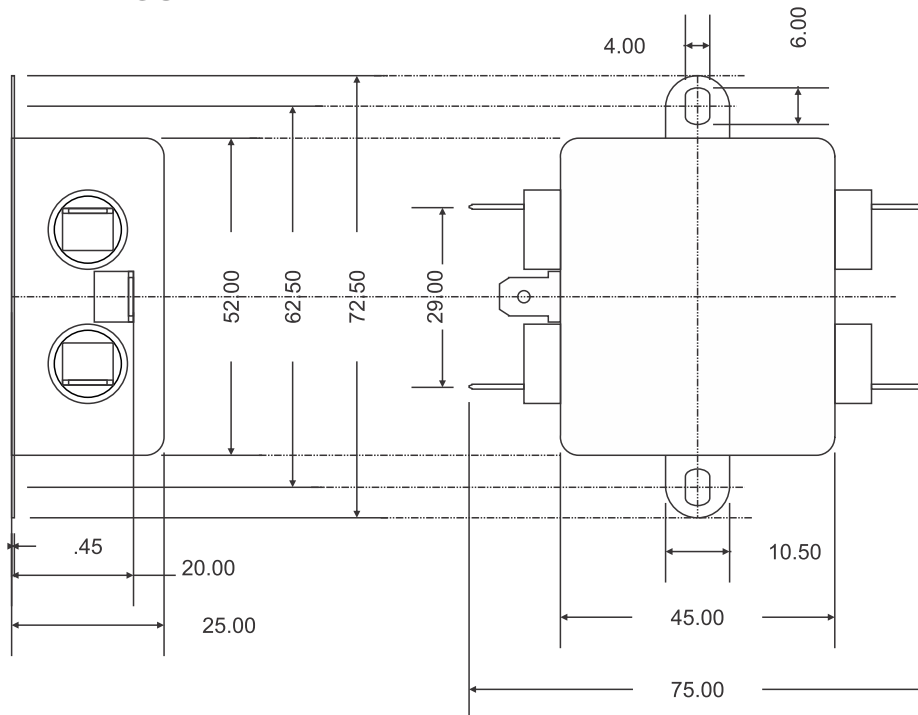


Available part numbers:

ME-3LF11	ME-3LF16
ME-6LF11	ME-6LF16
ME-10LF11	ME-10LF16
ME-15LF11	ME-15LF16
ME-20LF11	ME-20LF16

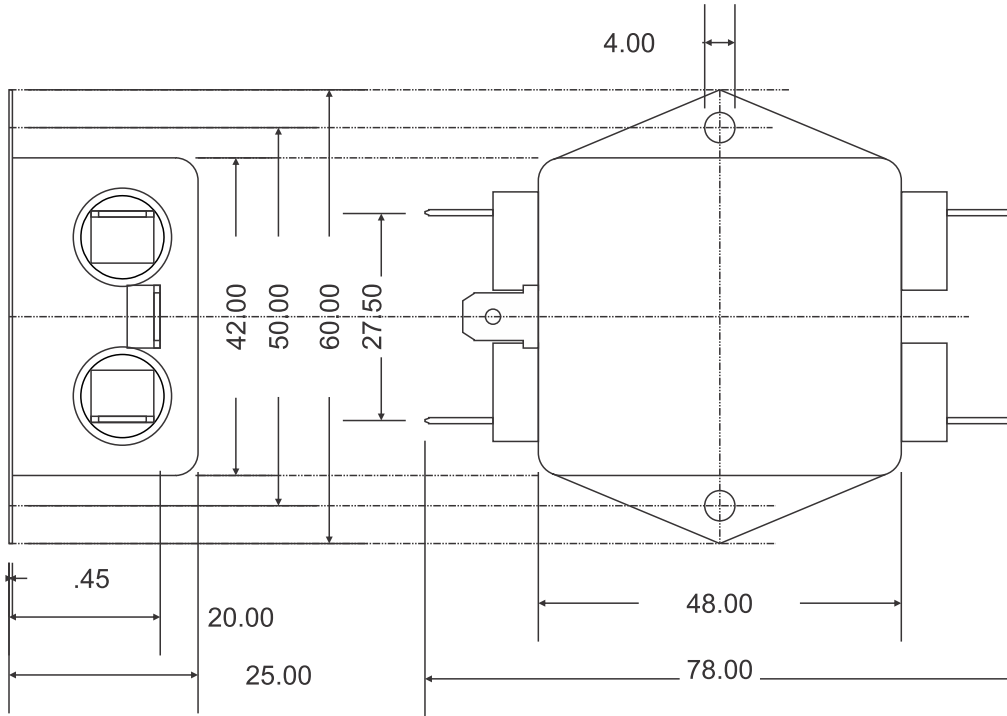
DIMENSIONAL DRAWINGS:

Case Style 11:



All dimensions are in mm ± 2mm

Case Style 16:



All dimensions are in mm \pm 2mm