

Performance PCB mountable EMI / RFI / EMC Filters

LD SERIES

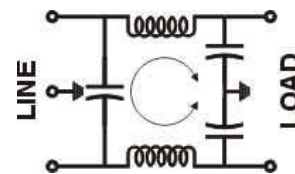
- These are high performance PCB mountable filters. They are intended to be all the power line filter required for the emission control application.
- They are designed to suppress noise generated due to switching of active devices at higher frequencies.
- Applications include Digital application devised (ECR, electronic scales), test equipments, control devices, switching power supplies, various other electronic devices.

Technical specifications:

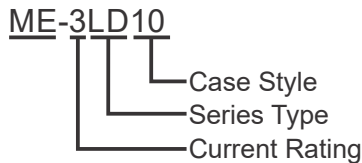
Maximum Voltage	250VAC
Operating Frequency	DC-400Hz
Rated Current(@ 40°C)	1A, 3A & 6A
Leakage Current @ 240VAC, 50 Hz.	0.5mA
High Potential Test Voltage	
Line to Ground	2 KVAC (2 Secs)
Line to Line	2 KVDC (2 Secs)
Insulation Resistance	>500Mohms @ 500VDC
Temperature Range	-25°C to +85°C



Electrical Schematic



Ordering Information:

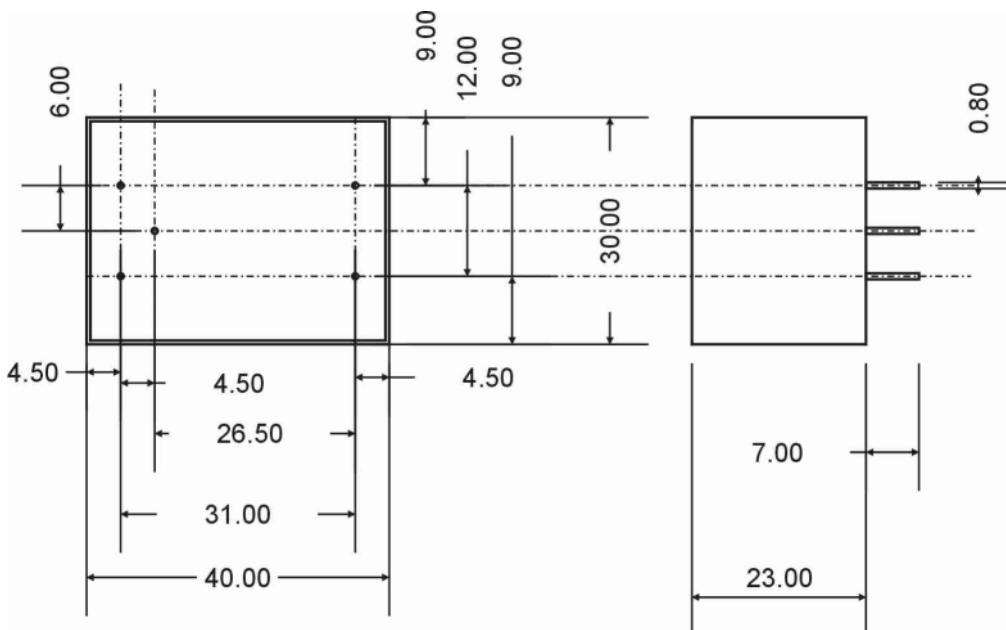


Available part numbers:

- ME-1LD9 ME-1LD10
- ME-3LD9 ME-3LD10
- ME-6LD9 ME-6LD10
- ME-1LD26
- ME-3LD26
- ME-6LD26

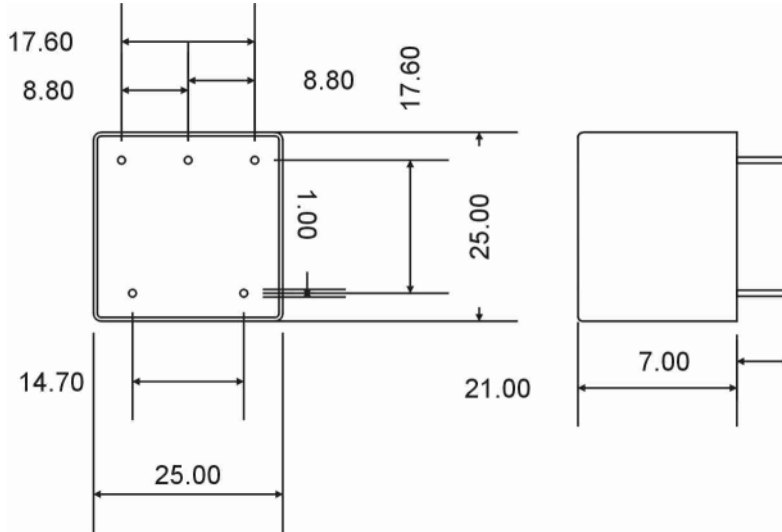
DIMENSIONAL DRAWINGS:

Case Style 9:

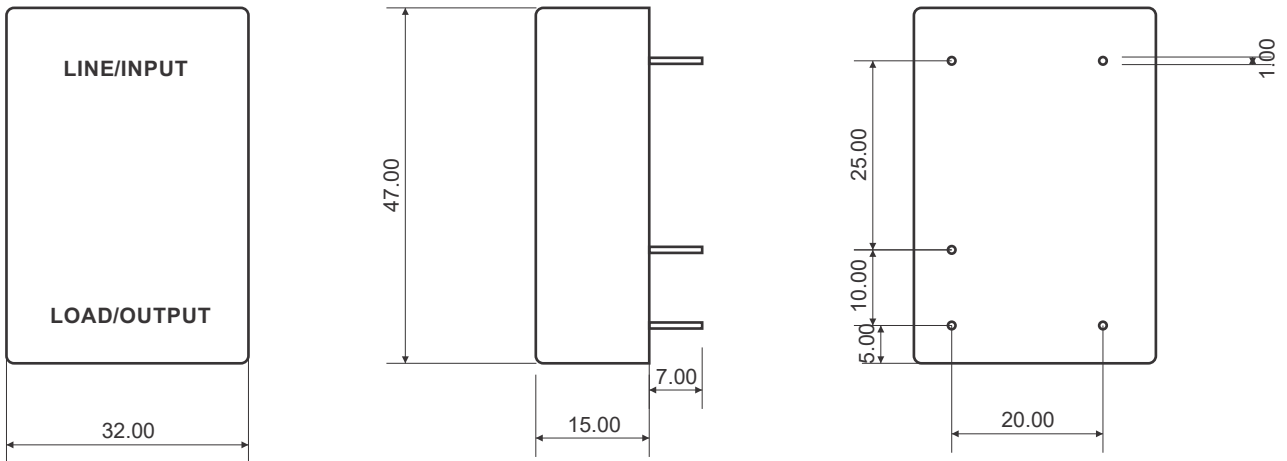


All dimensions are in mm ± 2mm

Case Style 10:



Case Style 26:



All dimensions are in mm \pm 2mm