

**Performance PCB mountable EMI / RFI / EMC Filters LD26DC SERIES**

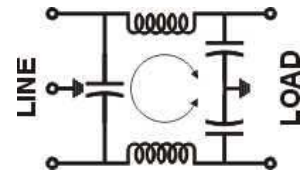
- These are high performance PCB mountable filters. They are intended to be all the power line filter required for the emission control application.
- They are designed to suppress noise generated due to switching of DC-DC Convertors.
- Applications employing DC-DC convertors, like Fire Controller, GPON equipment, Electric Vehicles etc.



**Technical specifications:**

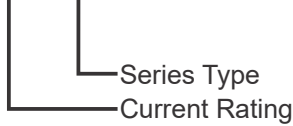
Maximum Voltage	48VDC
Operating Frequency	DC.
Rated Current(@ 40°C)	1A, 3A, 6A & 30A
High Potential Test Voltage	
Line to Ground	2 KVAC (2 Secs)
Insulation Resistance	>500Mohms @ 500VDC
Temperature Range	-25°C to +85°C

**Electrical Schematic**



**Ordering Information:**

ME-6LD26DC

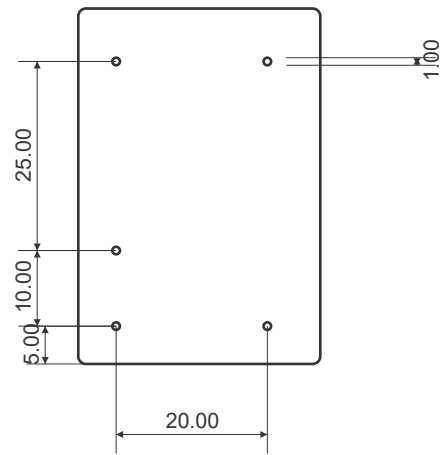
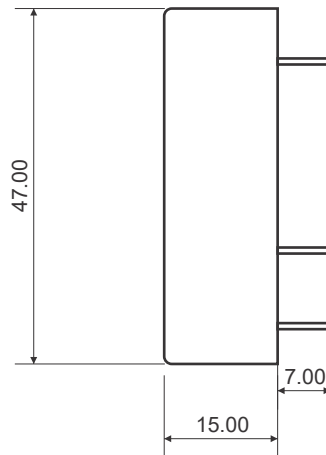
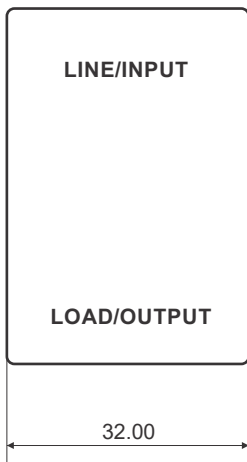


**Available part numbers:**

- ME-1LD26DC
- ME-3LD26DC
- ME-6LD26DC
- ME-30LD26DC

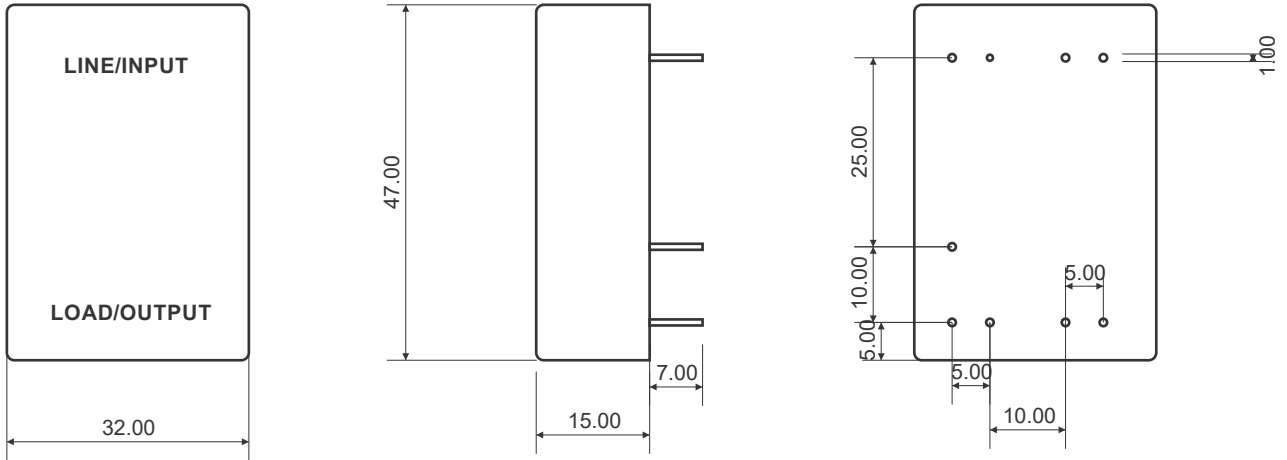
**DIMENSIONAL DRAWINGS:**

**Case Style 26 (Currents upto 6A:**



All dimensions are in mm ± 2mm

Case Style 26(For 30A):



All dimensions are in mm  $\pm$  2mm