

High Performance Two stage Filter for Switching noise suppression

SI SERIES

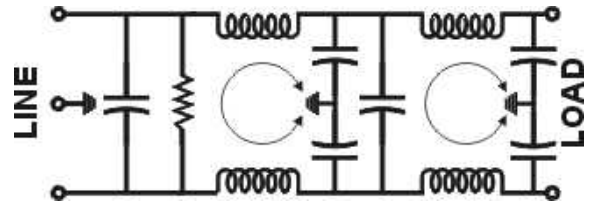
- These filters are designed to provide superior common mode and differential mode attenuation for most of the digital equipment over the frequency range of 50KHz to 150KHz.(particularly Switching power supplies and sensitive equipment)..
- These are cost effective solution for very noisy equipment that must meet conducted and emission control limits and is susceptible to RFI.
- Applications include Computer and peripherals, office automation devices, CNC machines, motor control devices etc.



Technical specifications:

Maximum Voltage	250VAC
Operating Frequency	DC-400Hz
Rated Current(@ 40°C)	1A, 3A, 6A, 10A, 15A, 20A, 30A, 50A, 60A, 80A, 100A, & 150A
Leakage Current @ 240VAC, 50 Hz.	0.75mA<= 6A & 1.5ma >=6A
High Potential Test Voltage	
Line to Ground	2 KVAC (2 Secs)
Line to Line	2 KVDC (2 Secs)
Insulation Resistance	>500Mohms @ 500VDC
Temperature Range	-25°C to +85°C

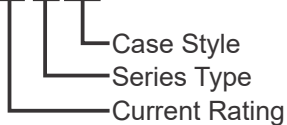
Electrical Schematic



Ordering Information:

Available part numbers:

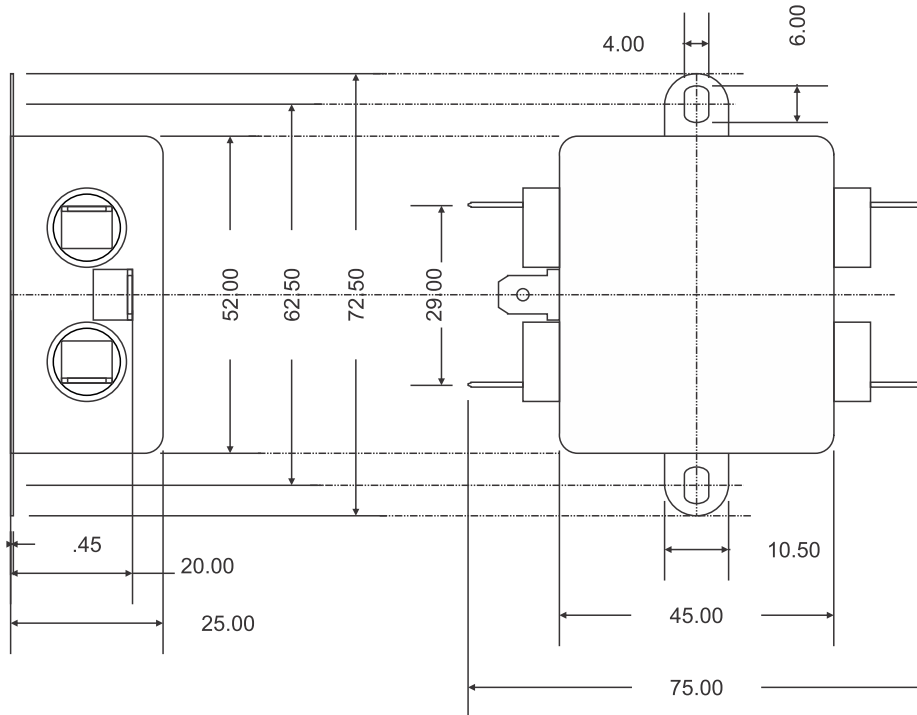
ME-50SI18



ME-1SI11	ME-3SI11	ME-6SI11
ME-1SI16	ME-3SI16	ME-6SI16
ME-10SI13	ME-15SI13	ME-20SI18
ME-30SI18	ME-50SI18	ME-60SI18
ME-80SI24	ME-100SI24	ME-120SI24
ME-150SI24		

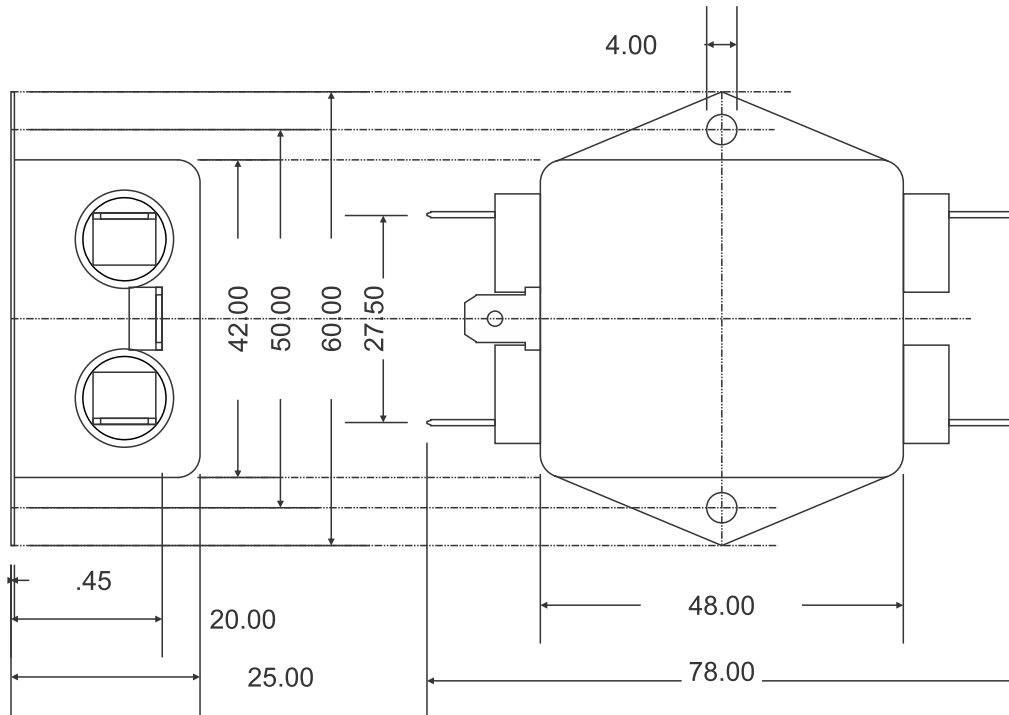
DIMENSIONAL DRAWINGS:

Case Style 11:

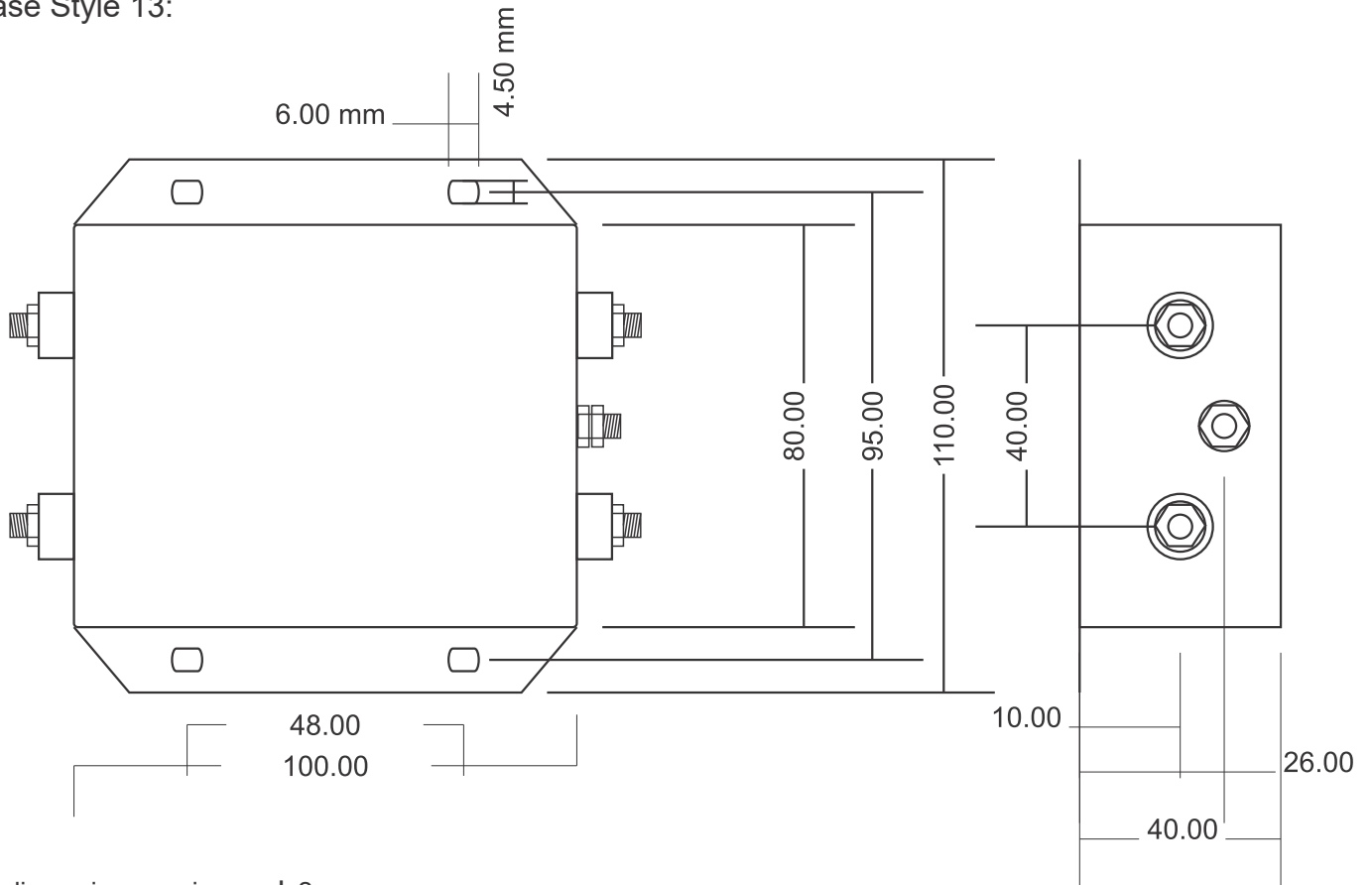


All dimensions are in mm ± 2mm

Case Style 16:

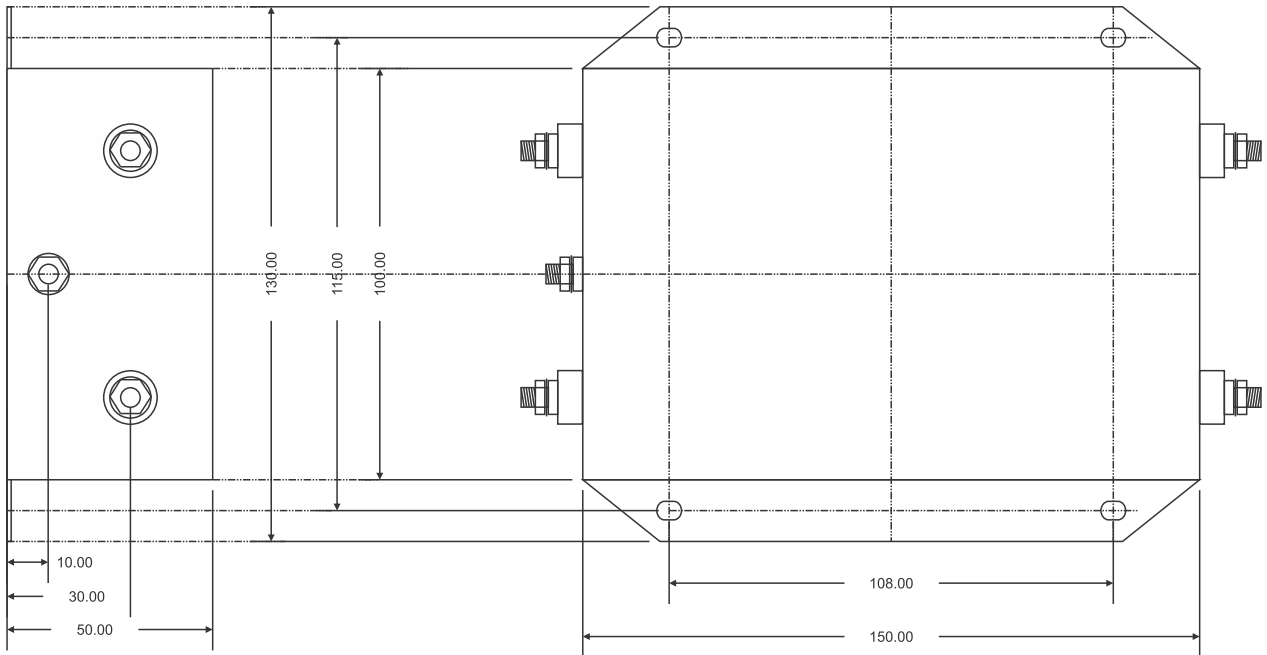


Case Style 13:

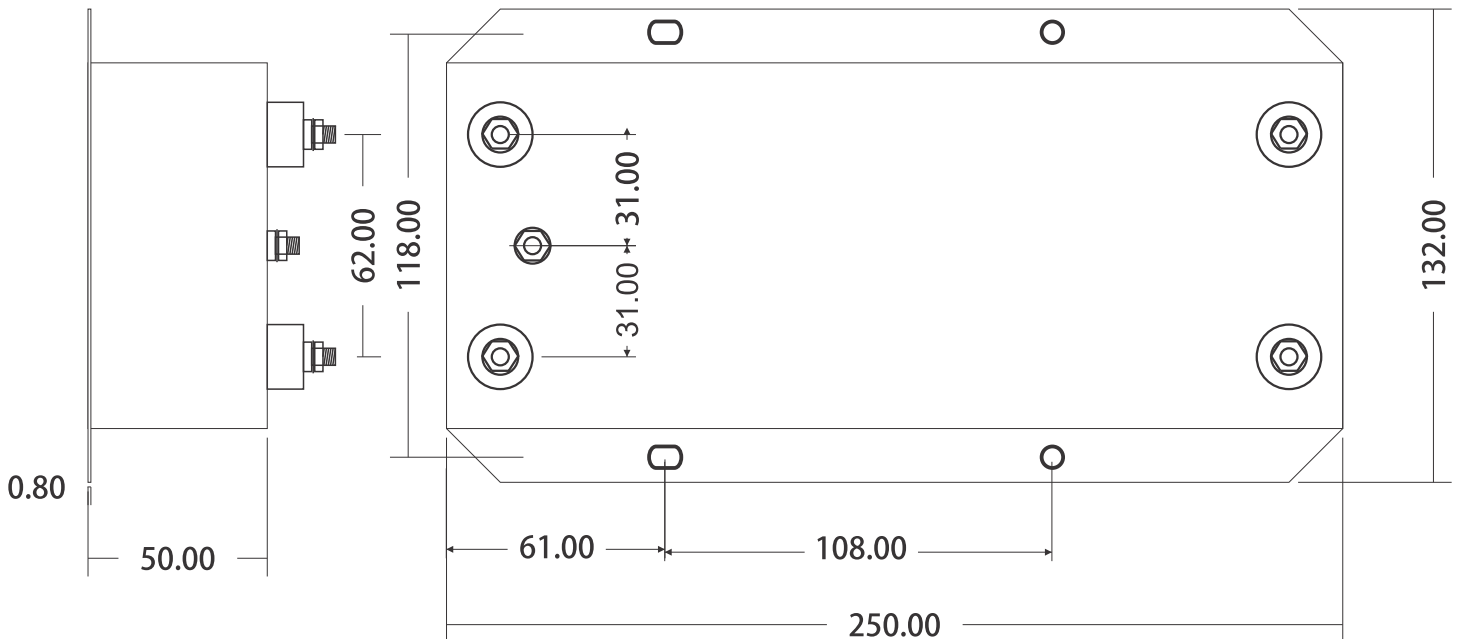


All dimensions are in mm \pm 2mm

Case Style 18:



Case Style 24:



All dimensions are in mm \pm 2mm