

**Performance PCB mountable EMI / RFI / EMC Filters LD26DC SERIES**

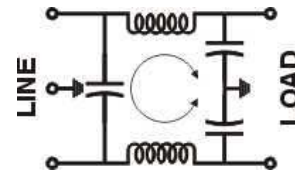
- These are high performance PCB mountable filters. They are intended to be all the power line filter required for the emission control application.
- They are designed to suppress noise generated due to switching of DC-DC Convertors.
- Applications employing DC-DC convertors, like Fire Controller, GPON equipment, Electric Vehicles etc.



**Technical specifications:**

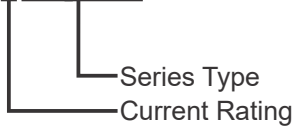
Maximum Voltage	48VDC
Operating Frequency	DC.
Rated Current(@ 40°C)	1A, 3A, & 6A.
High Potential Test Voltage	
Line to Ground	2 KVAC (2 Secs)
Insulation Resistance	>500Mohms @ 500VDC
Temperature Range	-25°C to +85°C

**Electrical Schematic**



**Ordering Information:**

ME-6LD26DC

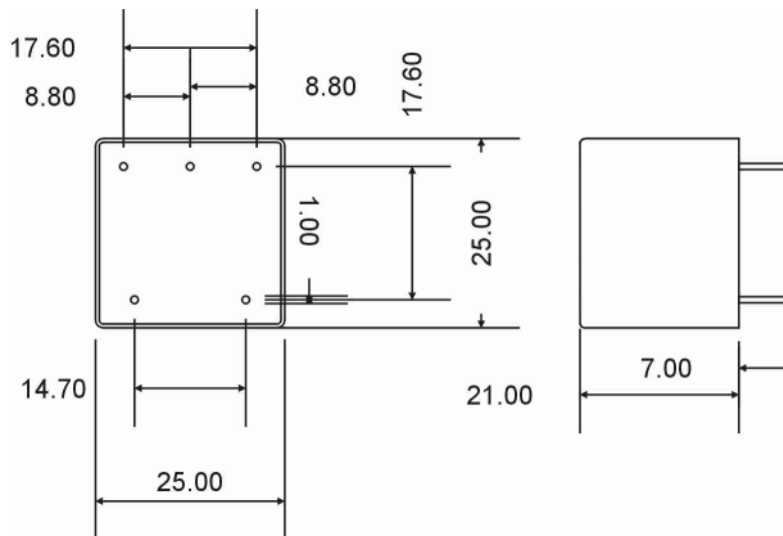


**Available part numbers:**

- ME-1LD10DC
- ME-3LD10DC
- ME-6LD10DC
- ME-30LD10DC

**DIMENSIONAL DRAWINGS:**

**Case Style 10:**



All dimensions are in mm ± 2mm