

IEC INLET EMI / RFI / EMC Filters with fuse

LA3 SERIES

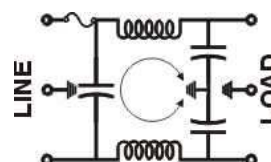
- These are general purpose IEC Inlet filters, effectively providing RFI control of the line to ground noise. These are compact and meets the very low leakage current requirements for portable equipments and non-patient medical equipments.
- These filters are designed to meet a variety of electronic and electrical applications, and provide with built-in fuse protection.
- Applications include equipment requiring small device such as digital application devices (ECR & others), various test equipments, weighing scales, medical equipments, computing devices etc.

Technical specifications:

Maximum Voltage	250VAC
Operating Frequency	DC-400Hz
Rated Current(@ 40°C)	1A, 3A & 6A
Leakage Current @ 240VAC, 50 Hz.	0.5mA
High Potential Test Voltage	
Line to Ground	2 KVAC (2 Secs)
Line to Line	2 KVDC (2 Secs)
Insulation Resistance	>500Mohms @ 500VDC
Temperature Range	-25°C to +85°C



Electrical Schematic



Ordering Information:

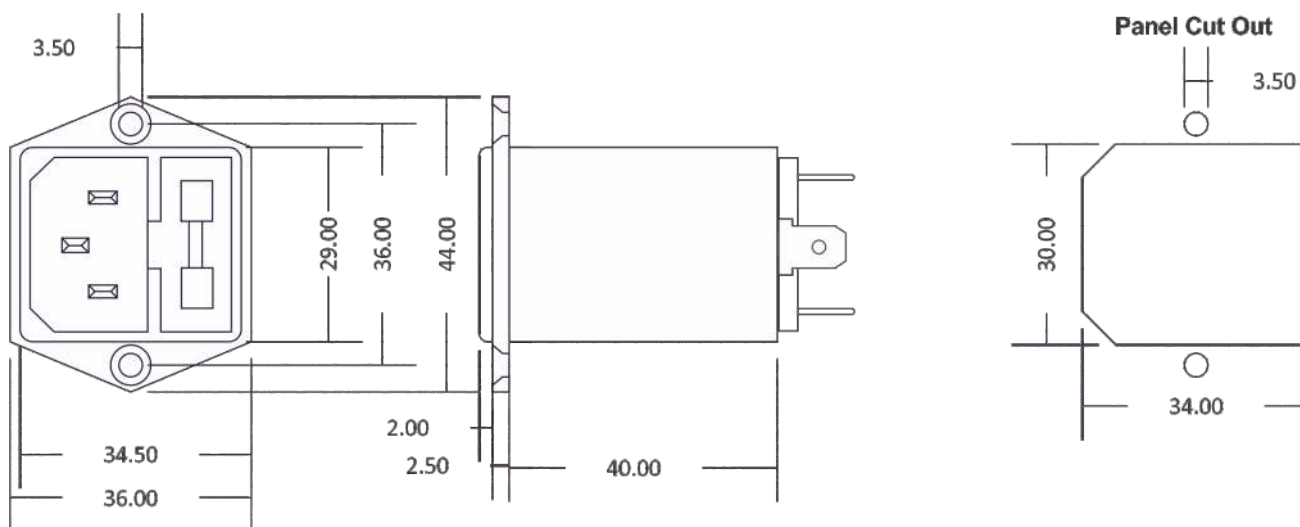
ME-3LA3

Series Type
Current Rating

Available part numbers:

ME-1LA3
ME-3LA3
ME-6LA3

DIMENSIONAL DRAWINGS:



All dimensions are in mm \pm 2mm