

IEC INLET EMI / RFI / EMC Filters

LA1 SERIES

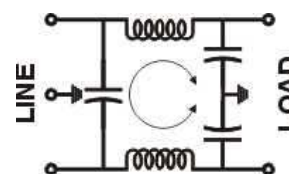
- These are general purpose IEC Inlet filters, effectively providing RFI control of the line to ground noise. These are compact and meets the very low leakage current requirements for portable equipments and non-patient medical equipments.
- These filters are designed to meet a variety of electronic and electrical applications.
- Applications include equipment requiring small device such as digital application devices (ECR & others), various test equipments, weighing scales, medical equipments, computing devices etc.

Technical specifications:

Maximum Voltage	250VAC
Operating Frequency	DC-400Hz
Rated Current(@ 40°C)	1A, 3A & 6A
Leakage Current @ 240VAC, 50 Hz.	0.5mA
High Potential Test Voltage	
Line to Ground	2 KVAC (2 Secs)
Line to Line	2 KVDC (2 Secs)
Insulation Resistance	>500Mohms @ 500VDC
Temperature Range	-25°C to +85°C



Electrical Schematic



Ordering Information:

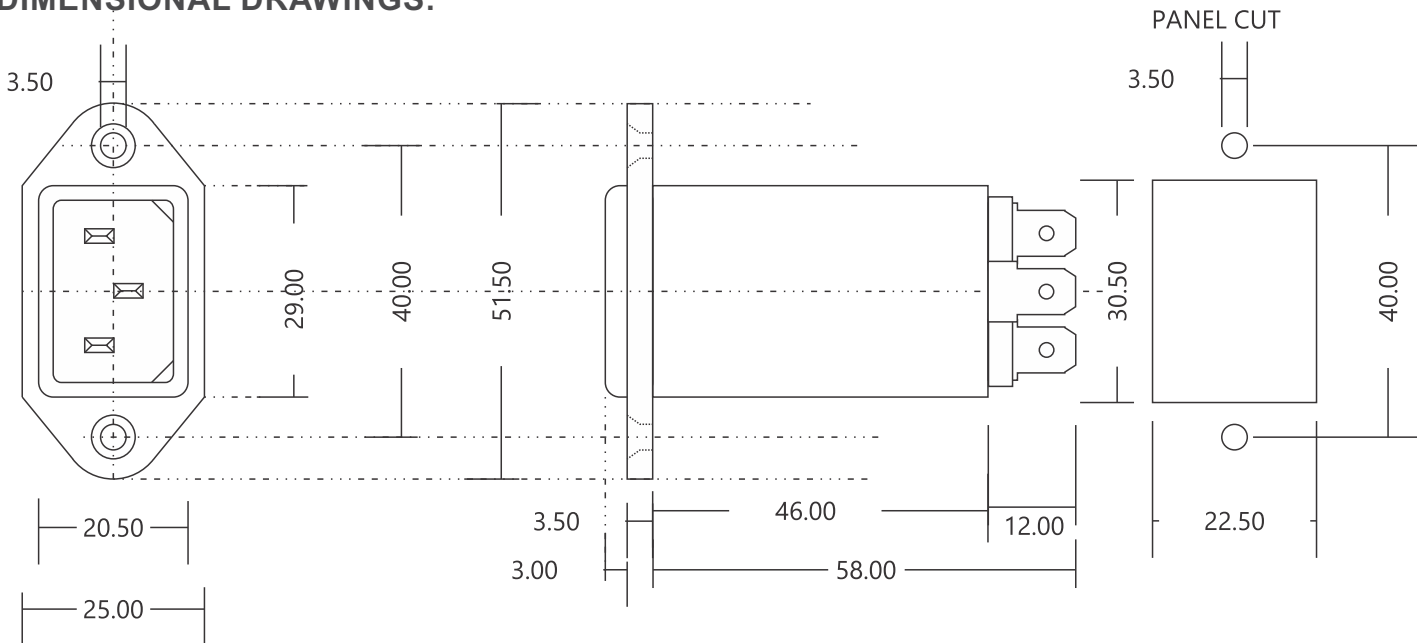
ME-3LA1



Available part numbers:

- ME-1LA1
- ME-3LA1
- ME-6LA1

DIMENSIONAL DRAWINGS:



All dimensions are in mm ± 2mm